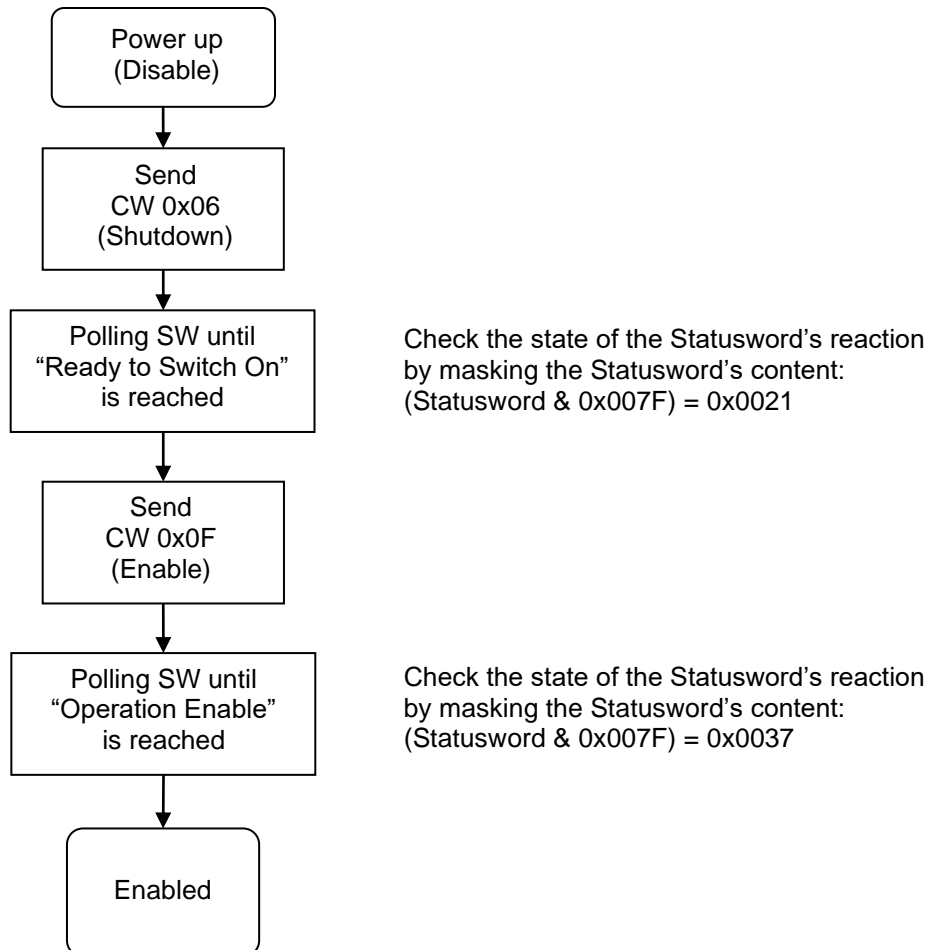


maxon motor control		
Maxon motor ag Brünigstrasse 220 CH – 6072 Sachseln www.maxonmotor.com	EPOS4: Checking Statusword after updating Controlword	Version: 07.07.20 / OPE + WJ

EPOS4 sequence for enabling

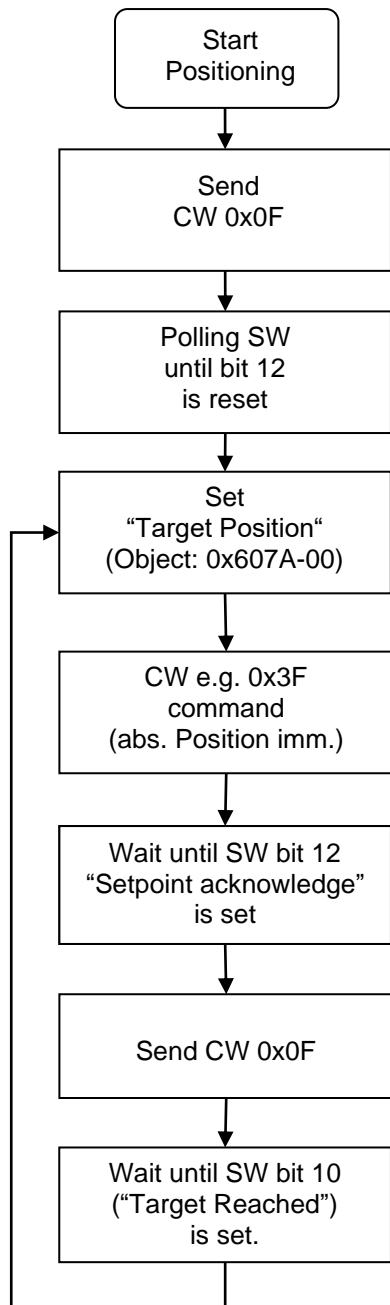


Abbreviations in use by the flowchart:

- CW: Controlword, Object 0x6040-00
- SW: Statusword, Object 0x6041-00

maxon motor control		
Maxon motor ag Brünigstrasse 220 CH – 6072 Sachseln www.maxonmotor.com	EPOS4: Checking Statusword after updating Controlword	Version: 07.07.20 / OPE + WJ

EPOS4 sequence for updating the “Target Position” in Profile Position Mode”



Preconditions:

- „Profile Position Mode“ is already configured and activated.
- Drive is enabled.

0x1F: absolut Positioning
 0x3F: absolut Positioning start immediatly
 0x5F: relaltiv Positioning immediatly
 0x7F: relaltiv Positioning start immediatly

Remark:
 SW Bit 12 “Setpoint acknowledge” will be reset again due to this.

Optional:
 Checking if target position is reached e.g. before an updated “Target Position” is commanded again.

Abbreviations in use by the flowchart:

- CW: Controlword, Object 0x6040-00
- SW: Statusword, Object 0x6041-00

Cross reference:

- “EPOS4 Application Notes Collection”